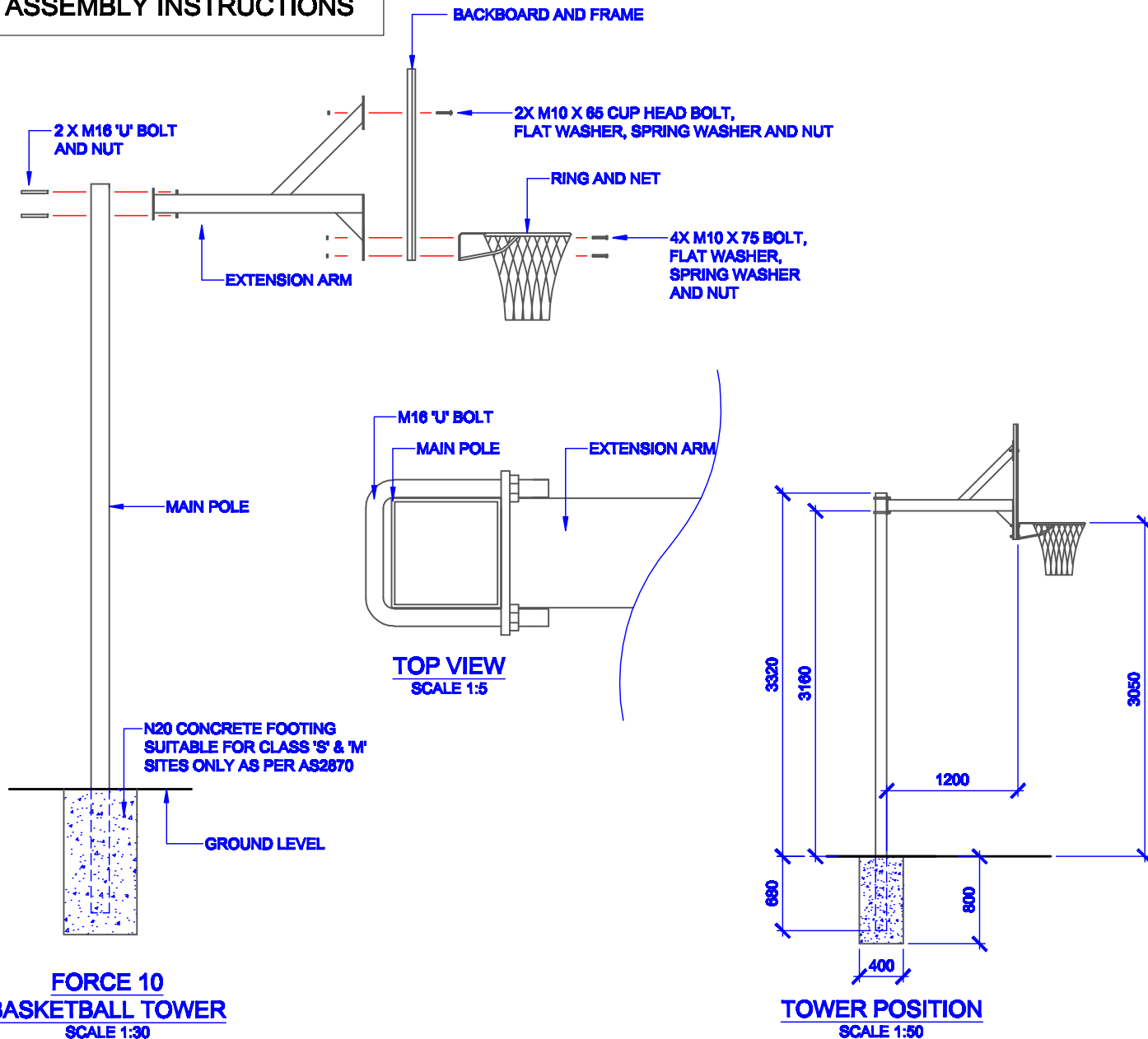


ASSEMBLY INSTRUCTIONS



COMPONENTS

QTY	ITEM
1	MAIN POLE
1	EXTENSION ARM
1	BACKBOARD AND FRAME
1	RING AND NET
2	M10 X 65 CUP HEAD BOLT, FLAT WASHER, SPRING WASHER & NUT
4	M10 X 75 BOLT, FLAT WASHER, SPRING WASHER & NUT
2	M16 'U' BOLT AND NUT
-	-
-	-
-	-
-	-
-	-
-	-
-	-

TITLE: FORCE 10 BASKETBALL TOWER	
DRAWING NUMBER: FORCE 10 ASSEMBLY	
WEIGHT: -	REV F/261009



Oz Ring Pty Ltd
 Trading as:
Play Hard Sports Equipment
 ABN 79 066 094 559
 24 Ern Harley Drive
 Burleigh Heads Qld 4220
 Phone: (07) 5593 4494
 Fax: (07) 5593 4338
 Website: www.playhardsports.com.au
 Email: email@playhardsports.com.au